

# Patient file management IP mobile workstations

As part of the computerisation of nursing wards, PRATICIMA proposes you different models of mobile workstations for laptop, panel PC or screen with central unit.

Our stations are **ultra light, very handy**, and offer a real comfort of use. Retrospectively **configurable and modular**, they evolve according to needs of health professionals.

Non-contractual photo



## Advantages

- ▶ Adjustable height of working surface by gas cylinder : sitting and standing position
- ▶ Standard rail adjustable over the entire height
- ▶ Many accessories available
- ▶ Smooth work surfaces without gaps for easy cleaning
- ▶ Resistant to hospital disinfection products



Ergonomic



Hygienic

Patient file management

## IP mobile workstations

### Models



IP100



Possible adjustment  
of the position  
of the battery in height

IP101



IP200



IP201



IP202

#### Description

#### Reference

**IP100 mobile workstation**  
with roll bar for laptop

8EIP100

**IP101 mobile workstation**  
with roll bar for laptop + rail + battery holder + removable battery

8EIP101

**IP200 mobile workstation**  
with Vesa support

8EIP200

**IP201 mobile workstation**  
with holder for laptop

8EIP201

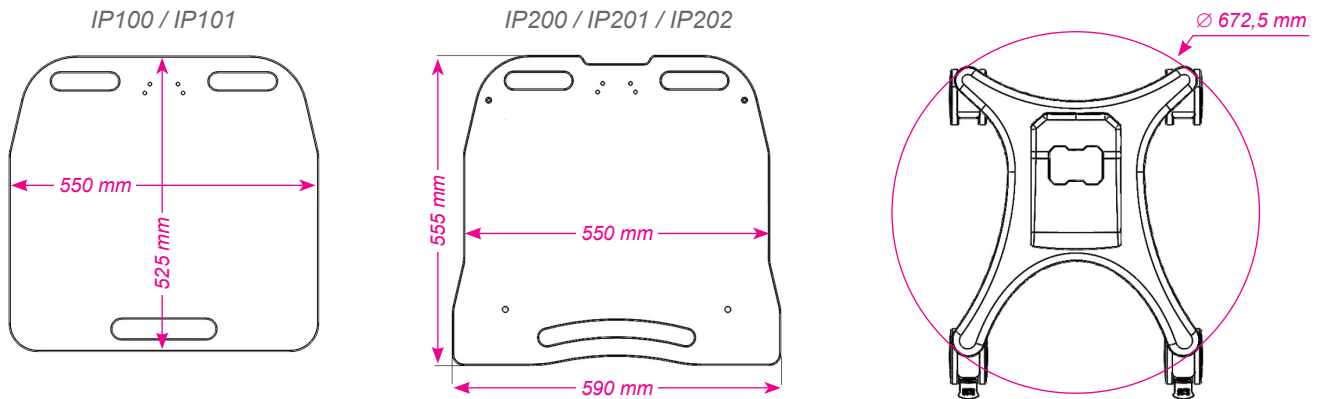
**IP202 mobile workstation**  
with holder for laptop, keyboard drawer and second shelf

8EIP202

## Patient file management

# IP mobile workstations

### Technical datas



### Materials

<b>Base</b>	Structure Epoxy coated steel and aluminium
<b>Work surface</b>	IP100 / IP101: Polyethylene (PE) Starboard thickness. 12.7 mm IP200 / IP201 / IP202: PMMA white translucent thickness. 8 mm
<b>Wheels</b>	Double non marking rubber wheels - Polyamide cover (PA)
<b>Key board drawer</b>	Support frame: RAL7040 steel / slide: zinc-plated steel / keyboard support: plastic
<b>Computer support</b>	Steel / plastic
<b>Vesa support</b>	Steel / aluminium / plastic
<b>Roll bar</b>	Steel / plastic

### Additional Information

<b>Base</b>	Grey colour
<b>Wheels</b>	Ø 100 mm - double roller - 2 fixed + 2 swivelling - double locking of the wheel and the pivot
<b>Gaz spring</b>	Gas spring with locking positions, controlled by an ergonomic handle
<b>Load capacity</b>	6 to 12 kg depending on the setting
<b>Empty weight</b>	IP100: 14.8 kg IP200: 21 kg IP201: 19,5 kg IP202: 24,25 kg without second tablet
<b>Overall dimensions</b>	IP100 / IP101: L. 550 x D. 525 x H. 865-1265 mm IP200: L. 590 x D. 555 x H. 1098-1628 mm IP201 / IP202: L. 590 x D. 555 x H. 1025-1425 mm
<b>Worktop height</b>	Mini: 815 mm / Maxi: 1215 mm
<b>Compatibility</b>	IP100 / IP101 / IP201 / IP202: laptop with a maximum overall width of 430 mm IP200 : maximum 27-inch screen compatible with Vesa standard

### Packaging

<b>Packing</b>	Individually on pallet strapped and film-wrapped, or on wheels, with proper protection
<b>Dimensions</b>	L. 620 x D. 600 x H. 920 mm

## Patient file management

# IP mobile workstations

### Optional accessories

#### Standard rail and compatible accessories



Standard rail fixed on front or back of the column  
Ref. 8E480



Large lateral basket  
Ref. 28061N.GR



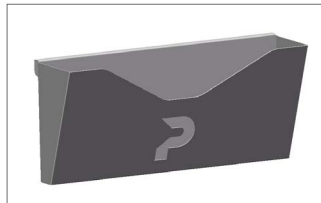
Small lateral basket  
Ref. 28062N.GR



Storage bin  
Ref. 28063N.GR



Battery holder  
Ref. 2C000



Document holder  
Ref. 28013

#### Other accessories



Barcode reader holder  
Ref. 8E473



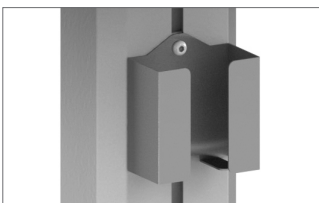
Mouse holder  
Ref. 8E472



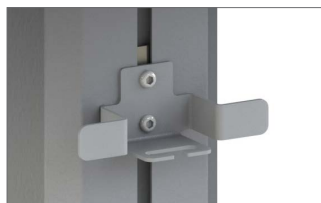
Antiseptic support  
Ref. 8E478



UC support  
Ref. 8E471



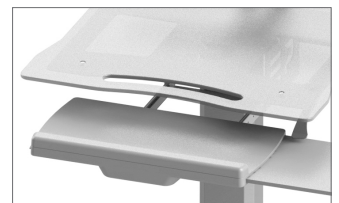
Horizontal power supply support  
Ref. 8E475



Small cable hook  
Ref. 8E479



Additional shelf  
Ref. 8E482



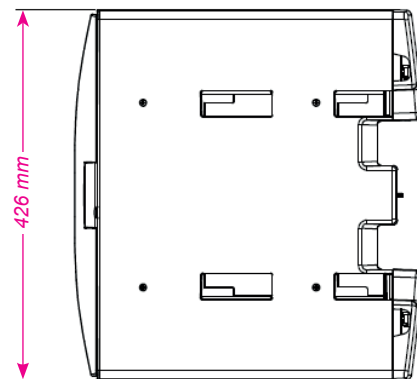
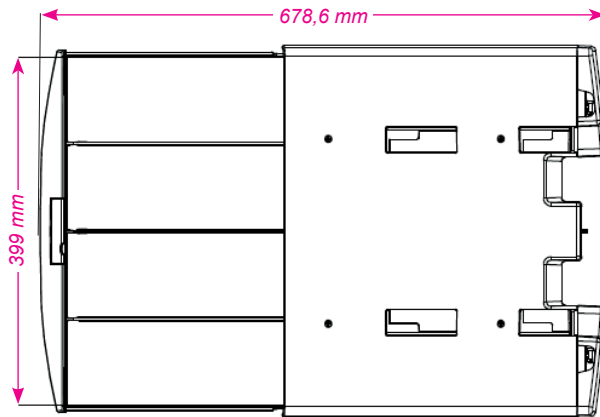
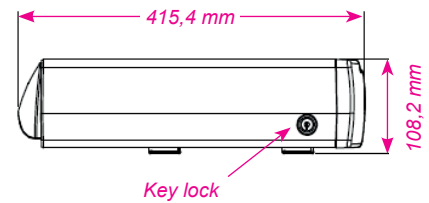
Keyboard drawer with right or left mouse holder  
(incompatible with 8EIP100 workstation)  
Ref. 8E483

## Patient file management

# IP mobile workstations

### Drawer unit - Ref. 8E486

- ▶ Material: steel / aluminum alloy / plastic
- ▶ Weight: 3,7 kg
- ▶ External dimensions: 426 x 108,2 x 415,4 mm
- ▶ Interior dimensions: 399 x 70 x 298 mm
- ▶ Security: key lock
- ▶ Load capacity: 2 kg



### Removable battery - Ref. 8E485

- ▶ Type: Lithium Polymer
- ▶ Dimensions: 194 x 120 x 21 mm
- ▶ Color: silver gray
- ▶ Signalling: blue LEDs
- ▶ Autonomy: 7 hours
- ▶ INPUT power supply: 19 V / 1,2 A
- ▶ OUTPUT power supply:
  - DC 12V / 2,5 A
  - DC 16 V / 4 A
  - DC 19 V / 4 A
- ▶ Capacity: 30 000 mAh

